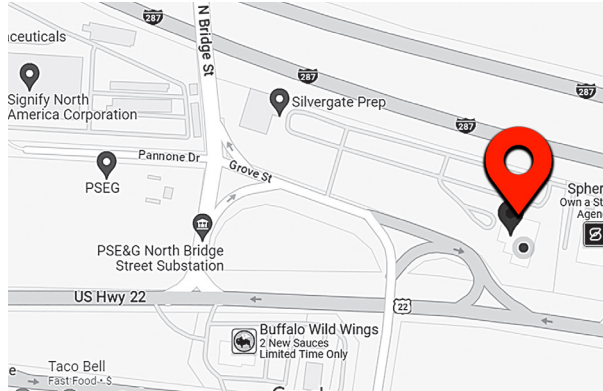
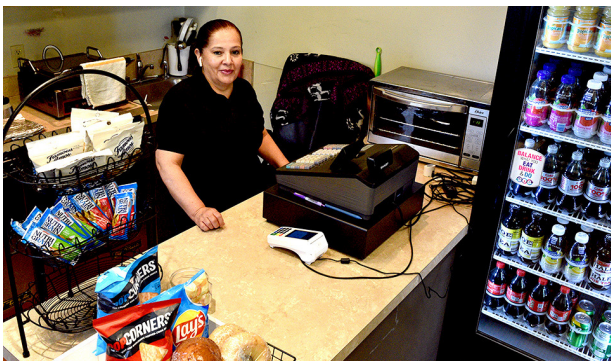




**Flex22** is the future for small business and startups in Central New Jersey. Conveniently located in Bridgewater on Route 22, minutes from Route 287, Route 78, restaurants, shopping, hotels, and major industry.

**Flex22** offers Residential Offices, Coworking Hot-Desks, Virtual Offices, Conference Room Rentals, Day Offices, and Business Identity Plans. Something for everyone.

With a mini café, fresh spaces, friendly faces, and exceptional service, our tenants appreciate their own place to network and grow.



**Flex22**  
991 US Highway 22 Ste. 200  
Bridgewater NJ 08807  
908.895.8022  
hello@officeflex22.com  
officeflex22.com





## Residential Offices

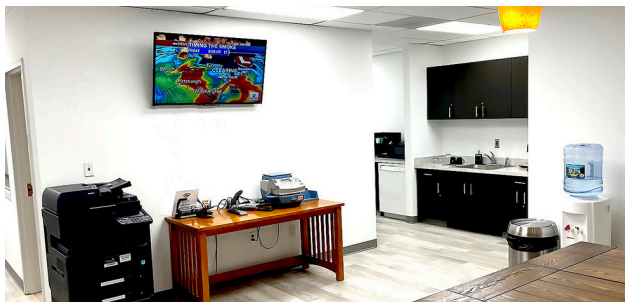


- Fully furnished, locking office
- 24/7 secure access
- Phone options
- Reception, kitchen, and other common areas
- Meeting & Conference rooms (8 hrs. /mo. Included)
- HVAC, cleaning and utilities
- FedEx package handling, and FedEx drop box

Residential Office (6 hours conf. room/mo.) \$500 - \$1400

Residential Office + phone number + desk phone + VM  
(6 hours conf. room/mo.) \$580 - \$1480

Residential Office + Live answer + phone number  
+ desk phone + VM (6 hours conf. room/mo.) \$625 - \$1525



## Virtual Offices

- Mail handling & forwarding  
Incl. 12 hours conference room or day room / mo. \$199/mo
- Mail handling & forwarding  
Phone number answered in your company name  
Phone screening and forwarding  
(Incl. 12 hours conference room or day room / mo.) \$250/mo.

## Coworking Hot-Desks



- Accommodates 4-5
- High Speed wireless
- Comfortable vibe
- Great for collaboration
- Flexible access
- Mini-cafe & coffee on premise

\$30/day/desk ▪ \$75/day group of 3

\$350 monthly pass/desk ▪ \$800 monthly pass/ group of 3

## Day Offices



- Private Office  
\$85/day  
\$395/week

## Conference Room Rentals



- Great location in Central NJ
- Comfortable, new facilities

Large Conference Room (seats 10)  
\$60/hr. | \$140 half day | \$190 full day

Small Conference Room (seats 6)  
\$45/hr. | \$100 half day | \$140 full day

## Business Identity Plans

- Mail / packaging handling and forwarding
- Access to meeting rooms and day offices (ala carte)
- Proof of business residency  
\$125/month