

Mini-Suite For Lease

In a brand new shared office space in Roseville

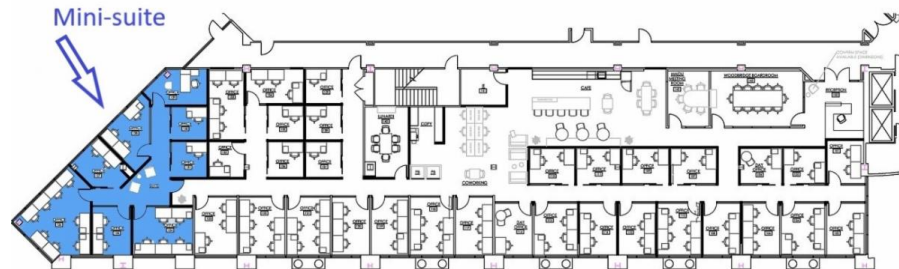
Get 10% commission on 1st year + 5% on 2nd year.

Douglas Corporate Center
 2999 Douglas Blvd. Suite 180
 Roseville, CA 95661



FLOOR PLAN

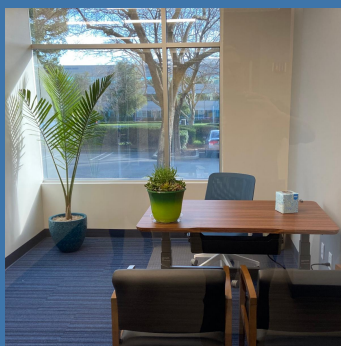
Mini-suite



Space plan shows the maximum user capacity per office.

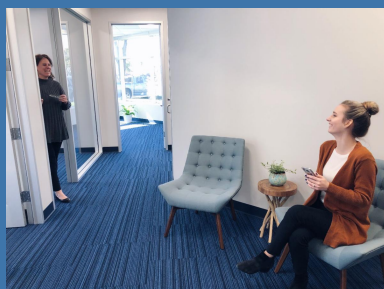
TEAM SPACE HIGHLIGHTS

- For 15 - 30 users
- Furnished, with sit/stand desks
- 1 Gig Internet
- \$11,995 rent + \$149 charge per user per month
- 2-months free on 12+month agreement



AMENITIES

- Free coffee + comfy lounge
- Free access to meeting rooms and coworking area
- Reception desk and community manager on-site
- Digital phone sets and live phone answering
- Weekly events



Visit PacificWorkplaces.com/Roseville for more info.

[Schedule Tour](#)