

Flexible Workspace

Photos and Pricing for IO Guests



INTELLIGENT OFFICE

Productivity, Prestige, Flexibility, and Freedom

As a modern business owner, there are countless ways to run and grow your business. In terms of where you work, you've never had more options. No matter what your needs, Intelligent Office has a solution that can be effortlessly customized; professional presentation-ready meeting spaces. Our workspaces are equipped with dry-erase walls, flat-screen monitors, conference-ready phones, Wi-Fi, beverages and is rentable by the hour, day, or week.

Low overhead. A prestigious business address. Fully-furnished offices. Tasteful furnishings and decor. Cutting edge technology. Exceptional staff. Modern amenities. 24/7 Access. It's a cost-effective alternative to commercial office leases that allows you to grow your company and helps you office intelligently.

- Easy Access: I270/Shady Grove Rd
 - Ample FREE parking
- Suite staffed with four Executive Assistants who greet your guests and support your business

Private Executive Offices

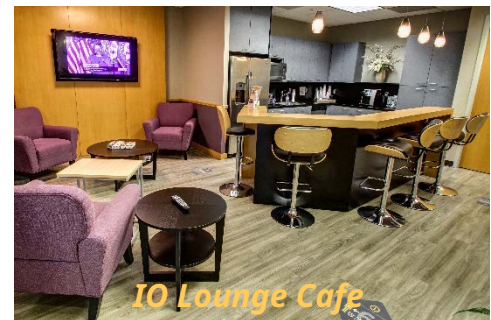
\$40/Hour | \$270/day | Starting at \$1,600/month



One Research Court, Suite 450



Lobby



IO Lounge Cafe

Individual, unreserved bar and club chair seating. Ideal solution for on-the-go business professionals who need a touch-down space to work.

***FREE** to IO workspace members



Workstations: \$25/Hour



**Podcast/Phone Room
\$25/hour**

Presentation-Ready Meeting Rooms



Enhanced In-Suite Services:

- Copier center: printing, scanning, faxing
 - ❖ Self-Service: 25¢/page B&W | 50¢/page Color
 - ❖ Staff Assisted: 35¢/page B&W | 55¢/page Color
 - ❖ Self-Service Fax: 50¢/page
 - ❖ Staff Assisted (Sending) Fax: 75¢/page
- Full-service deli on-site; catering, and snack services available
- After-Hour reservations available upon request
- 24/7 access available: \$75/month | \$25/use
- Notary & Witnessing: \$5.00/signature | \$2/initial
- Complimentary beverages
- OWL Meeting Pro: \$50/Use
- Upgrade to a workspace membership plan which reduces the hourly workspace rate by \$10/hour