

250 E OLIVE

DOWNTOWN BURBANK | HANHAI CIVIC PLAZA



LOCATION HIGHLIGHTS

- Convenient access to the 5 fwy, Amtrack station, the major studios and Hollywood Burbank Airport
- Highly-visible signage opportunities
- Surrounded by 100+ restaurant & retail amenities including proposed Burbank Town Center

PROPERTY HIGHLIGHTS

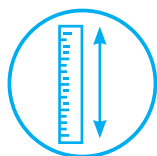
- High-end existing improvements (edit bays, blackout shades, exposed ceilings) ideal for post-production, editing, gaming & other media/entertainment uses
- Efficient floorplates with flexible demising opportunities
- Convenient amenities on-site – Banking, shipping and copy, and restaurant



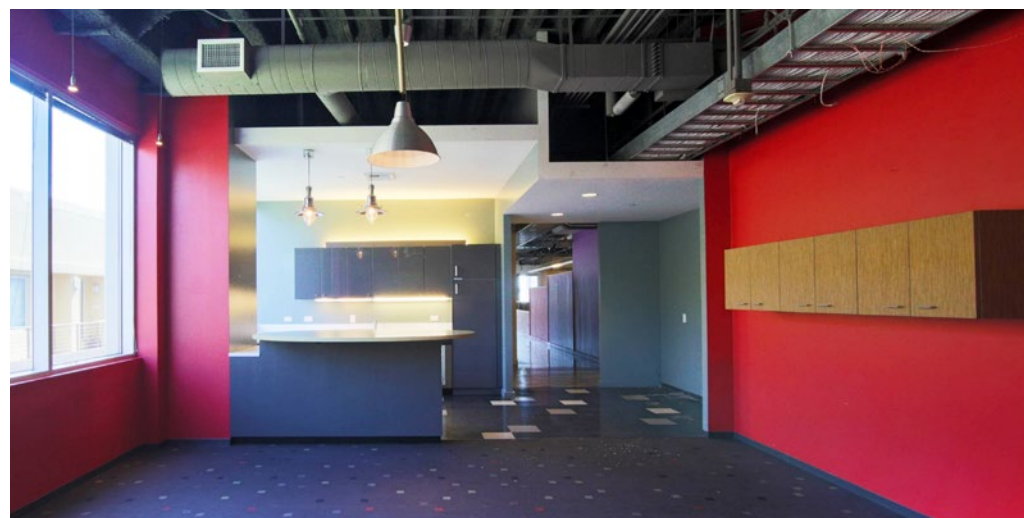
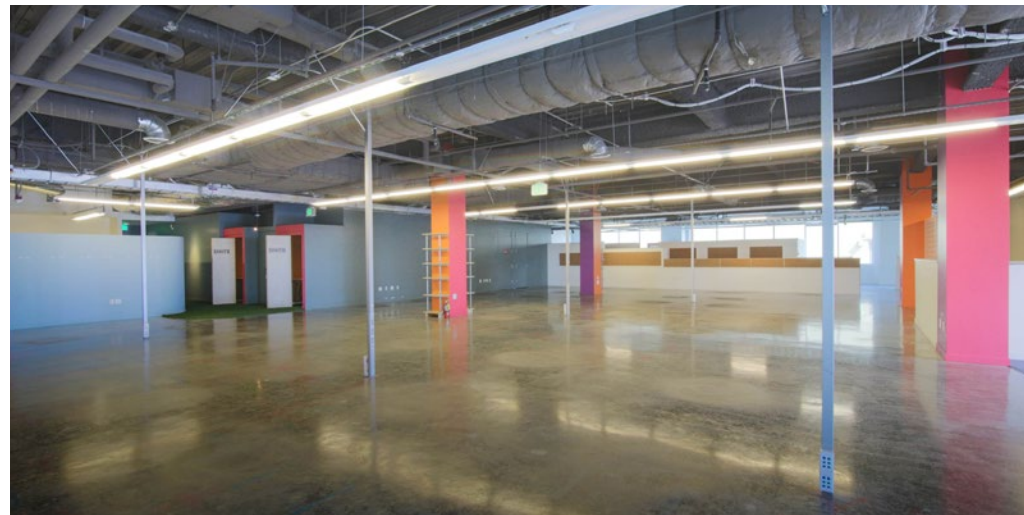
Dark Fiber



Up to 4.5:1,000
Unreserved and
Reserved Parking

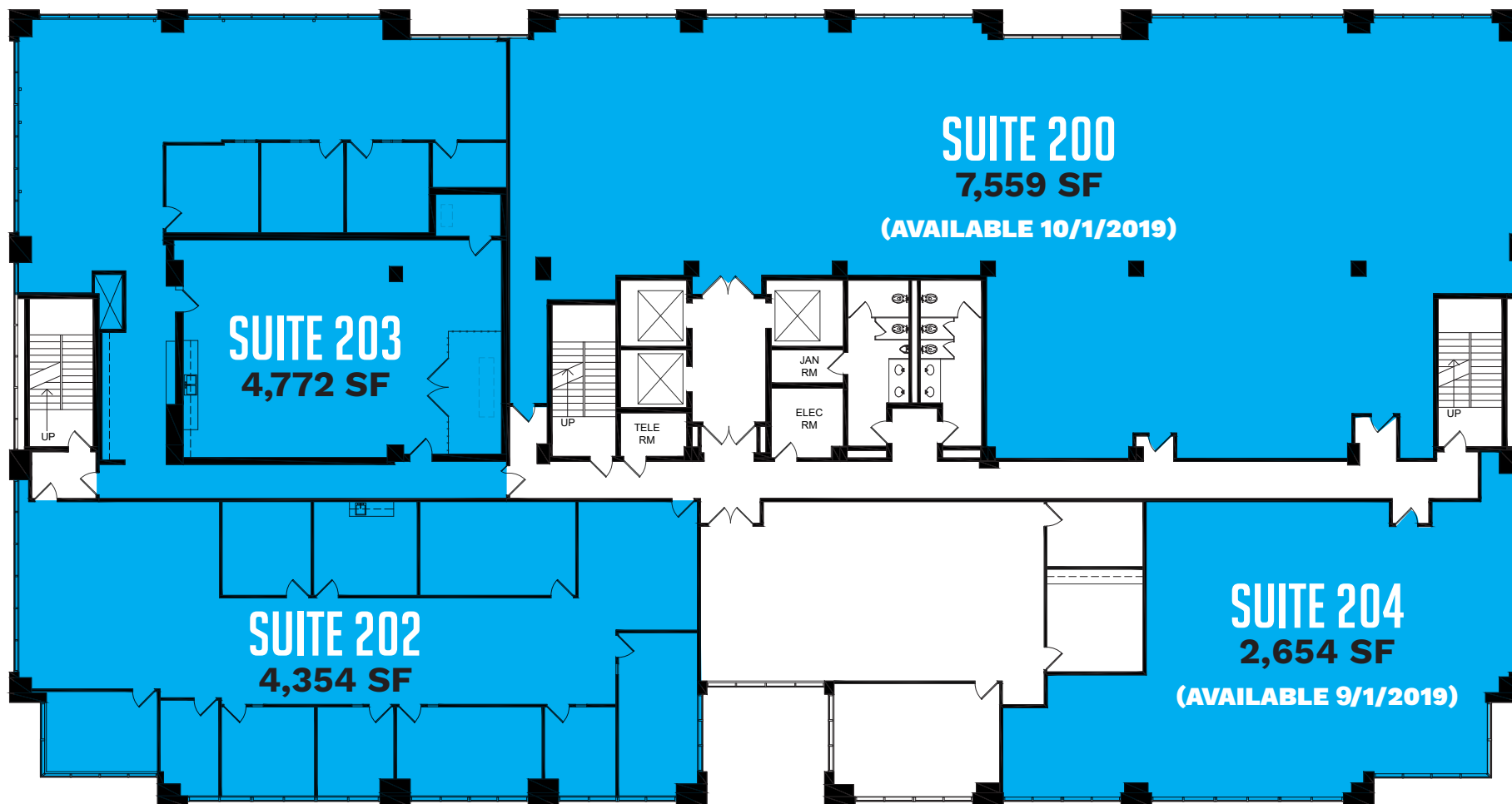


Ceiling Heights:
13'1" Slab-to-Slab



2ND FLOOR

2,654 - 19,339 SF



EXCLUSIVE AGENTS

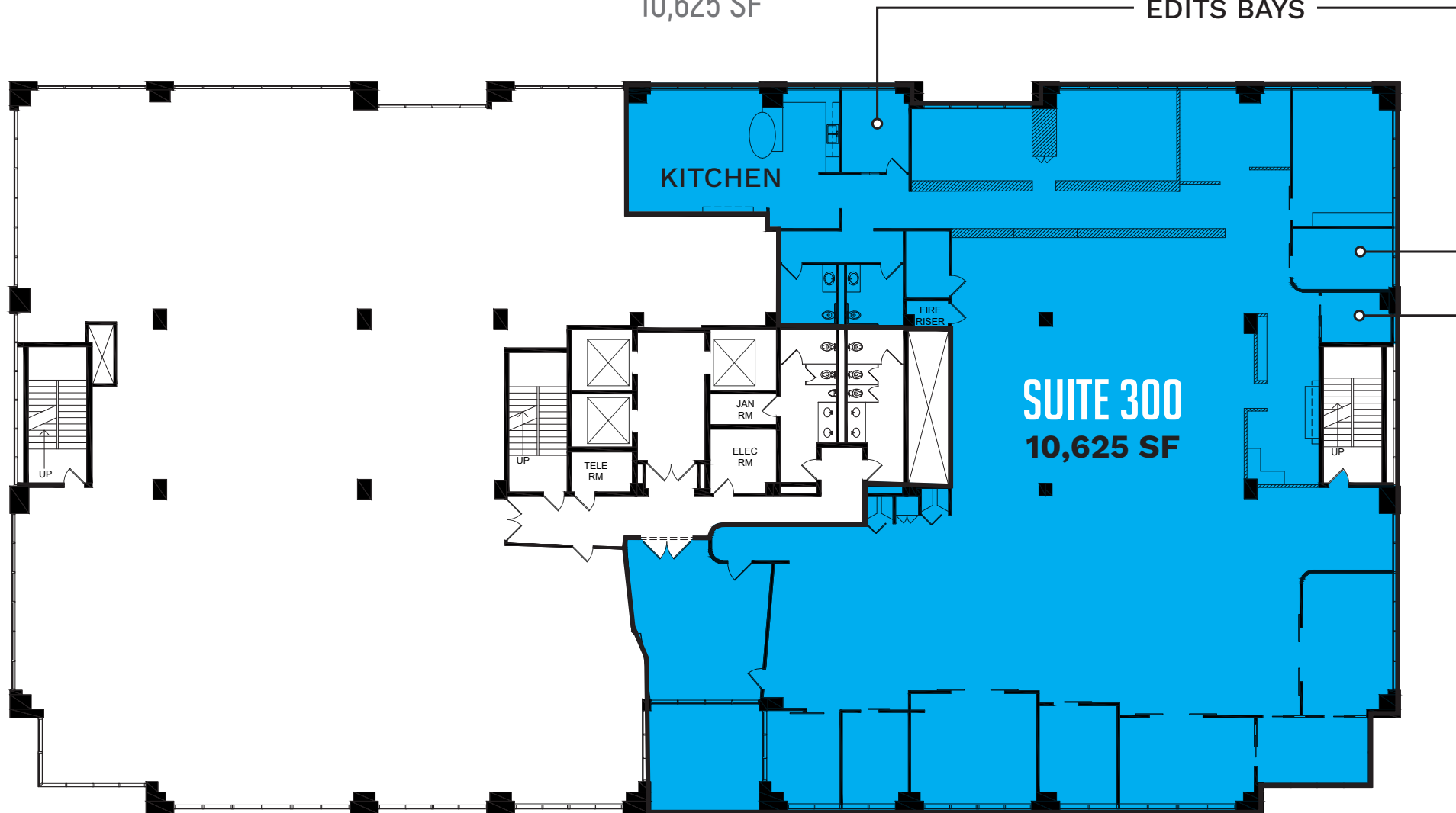
KATIE BERNHISEL Director
+1 213 330 0905 • katie.bernhisel@cushwake.com
LIC #01839497

DILLON MOSCONE Senior Associate
+1 213 330 0674 • dillon.moscone@cushwake.com
LIC #01965821

3RD FLOOR

10,625 SF

EDITS BAYS



EXCLUSIVE AGENTS

KATIE BERNHISEL Director
+1 213 330 0905 • katie.bernhisel@cushwake.com
LIC #01839497

DILLON MOSCONE Senior Associate
+1 213 330 0674 • dillon.moscone@cushwake.com
LIC #01965821