

Hello

We are
OnePiece Work
San Francisco



**ONEPIECE WORK
IS MORE THAN
JUST A
COWORKING
SPACE.**

We are a global tech community founded on the idea that together, we can unlock new potential across industries and borders.

At OnePiece Work, we believe that everyone belongs. A study discovered a 25% decrease in minority professionals' confidence in their workplace culture, growth opportunities, and feeling of belonging at work. That's how OnePiece Work was born.

We set out to create an inclusive global community that fosters personal and professional growth. Since our founding, we've partnered with over 250 companies across more than 30 industries — establishing OnePiece Work as a place to create, collaborate, and thrive.

San Francisco 旧金山

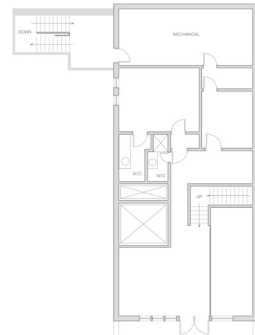
414 Brannan St
San Francisco, CA 94107

Floor Plan
13,000 Sq Ft

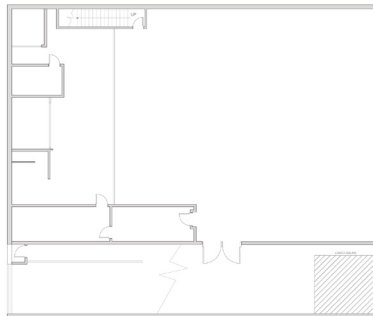
F2



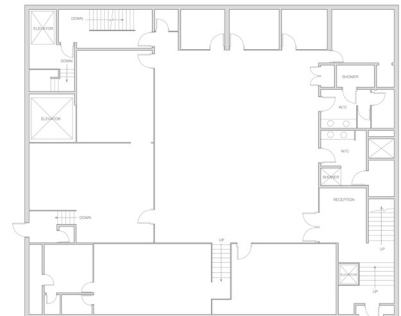
F3



FB



F1





Dedicated Desks
OnePiece Work San Francisco



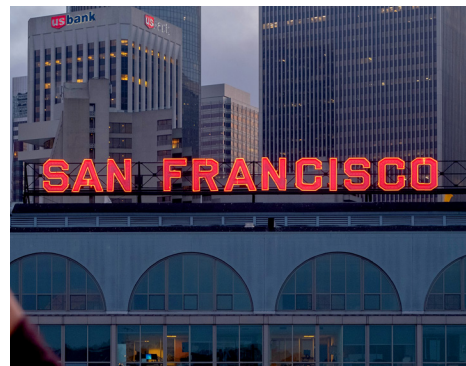
Dedicated Desks
OnePiece Work San Francisco

Conference Room
OnePiece Work San Francisco



Kitchen
OnePiece Work San Francisco





A STARTING
PLACE
FOR
GLOBAL
GROWTH.



Nearest Attractions

Oracle Park, Chase Center, Embarcadero, Ferry Building, Moscone Center, Museum of Modern Art, Yerba Buena Center for the Arts, Jewish Contemporary Museum, Museum of Ice Cream

Access to Highways

Less than 5 minutes from I-80 and Highway 280

Security

24/7 Access

Immediate Access

- Downtown San Francisco
- A block away is Oracle Park (where the Giants play)

Parking

Metered Street Parking with Garages and Open Parking lots in abundance in the neighborhood

Large Open Floor Plan

Workplace Lounge on the 2nd floor, and a large lounge/ event space in the basement

Public Transportation

- 15 Minute drive (12 miles) to San Francisco International Airport
- 25 Minute Drive (18 miles) to Oakland International Airport
- Both airports are accessible via public transit (BART) which is located 5 blocks away

Services

Fully Furnished Offices

Reception and Administration Services

Conference Rooms

Free Coffee and Snacks

High-Speed Internet

Unique Common Areas

Communal Pantry

Private Phone Booths

24/7 Access

Free access to OnePiece Work Global Locations

Weekly Community Event Access

Professional Training and Exclusive Events Access

Enterprise Mentors

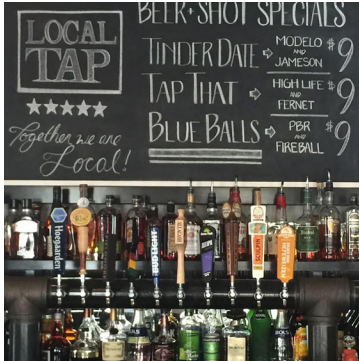
OnePiece Work Online App Support

Discounted Services / Products From OnePiece Work Partners

**AN
INTERNATIONAL
COMMUNITY,
ALL IN ONE PLACE.**



Lounge
OnePiece Work San Francisco



Local Tap Bar and Grill

600 3rd Street

Happy Hour, Burgers,
Great Beer Selection

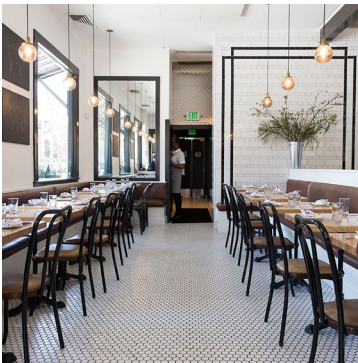


Alexander Steak House

448 Brannan Street

Great Wine Selection, Upscale
Steak House, Great Dessert

DINING AND MORE



Marlowe

500 Brannan Street

California Comfort Food, Late
night dining, Stylish, Hip



Lucky Strike

200 King Street

Bowling, Bar Food, Beer, Cocktails



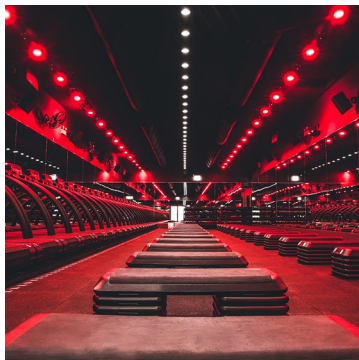
District

216 Townsend Street

Upscale Wine Spot, Tapas, Pizza

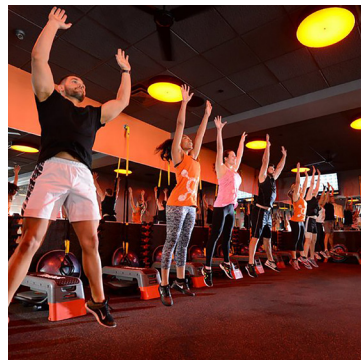
Neighborhood

HEALTH & FITNESS



Barry's Bootcamp

236 King Street



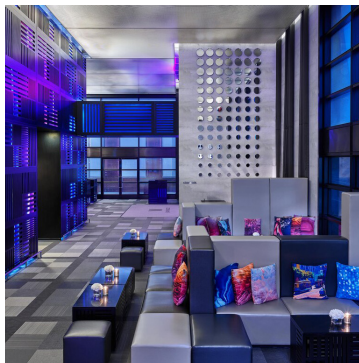
OrangeTheory Fitness

1619 N La Brea Ave



Virgin Hotel

250 4th Street



W Hotel

181 3rd Street

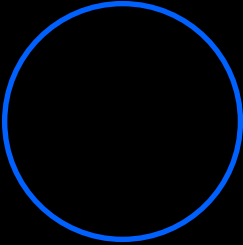
ACCOMMODATIONS

WHETHER YOU'RE LOOKING
FOR A FUTURE COLLABORATOR
OR JUST AN OUTSIDE
PERSPECTIVE ON YOUR WORK,
**ONEPIECE WORK IS DESIGNED
TO FOSTER FORWARD-THINKING
SOLUTIONS AND COLLABORATION
ACROSS GLOBAL MARKETS.
FIND THE SPACE THAT IS
RIGHT FOR YOU.**

Hot Desk

Dedicated Desk

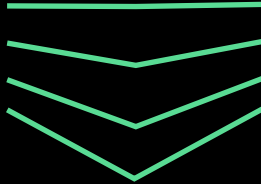
Private Office



Hot Desk

Flexible open area access
and free coffee services

Perfect for small business owners and freelancers (and everyone in-between) who need flexible access to a coworking space with perks of corporate office amenities and collaborative spirit of a start-up.



Dedicated Desk

Reserved space for an
individual or small teams

Great for small teams that need to join our community with reserved desks and additional perks. Enjoy a desk of your own in a shared working space.



Private Office

Customized space for
teams of 2-20 people

Our luxury, fully-furnished private offices are ideal for teams big or small. Enjoy the privacy and customization of a traditional office, with the perk of coworking amenities.



Event Space
OnePiece Work San Francisco

NEED AN EVENT SPACE?

E-mail: opevent@1piecework.com

Our vibrant, thoughtfully-designed spaces are fully equipped and our booking process is easy and streamlined to make hosting an event with us a breeze.



From intimate demos to massive workshops, festive holiday socials to executive meetings, hosting your next event at OnePiece Work will be one to remember.

Amenities

- Wifi
- 200 Folding Chairs (white)
- 4K Projectors (ceiling mounted)
- Projector Screens
- 4 Wireless Microphones
- 8 Surround Sound Speakers
- Furnitures
- Whiteboard
- Apple TV
- Restroom
- Capacity - 150 people
- Beverage (Coffee, Tea, Soda): Price ranges. Available upon request

ONEPIECE WORK LANDSCAPE



San Jose
San Francisco
Santa Monica
Foster City
Seattle
Santa Clara
Palo Alto
Hollywood
Shanghai
Shenzhen

Welcome to
OnePiece Work @ San Francisco
For More Details,
Please Contact Us.

E-mail: opsales@1piecework.com
Phone: +1 866.622.0588

**WE'RE BUILDING A
BETTER PLACE FOR YOU
TO WORK AND GROW**



**BOTH LOCALLY AND
GLOBALLY.**