

Hello

We are
OnePiece Work
Foster City



**ONEPIECE WORK
IS MORE THAN
JUST A
COWORKING
SPACE.**

OnePiece Work is a flexible office operator with an expert network that connects innovative leaders in tech.

At OnePiece Work, we believe that everyone belongs. We set out to create an inclusive global community that fosters personal and professional growth. Elevate your workspace with customized, flexible solutions for teams of all sizes — transform your ideas into action.

Since our founding in 2016, we've partnered with over 350 companies across more than 30 industries — establishing OnePiece Work as a place to create, collaborate, and thrive.



Lounge
OnePiece Work Foster City



Lounge
OnePiece Work Foster City

Font Desk
OnePiece Work Foster City



Lounge
OnePiece Work Foster City



TRUST
YOUR
CRAZY
IDEAS



A PLACE
TO CREATE,
COLLABORATE,
AND THRIVE.



On-site Fitness Center

Yes

Parking

Free parking on West and East side of the building. Lower 2 levels are free all day.

Access to Highways

Easy access to HWY 92 and HWY 101

View

Overlooking the Bay Area

Security

24/7 Access

Commute

- In-house bus shuttle to Hillsdale CalTrain Station, and Downtown San Mateo during morning, lunch, and afternoon hours.
- 14 Minutes to San Francisco Airport

Services

Fully Furnished Enterprise Office Suites

Official Business Address

All Inclusive Meeting Room Access

Friendly Reception and Administration

Access to OnePiece Work Global Locations

24/7 Access

Private Phone Booths

High-Speed Internet

Mail Handling Services

Enterprise Mentors

Discounted Services / Products from OnePiece Work Partners

**TOP-NOTCH
SERVICES DESIGNED
FOR YOU IN MIND.**



Private Work Station
OnePiece Work Foster City

DINING AND MORE



MOD Pizza

1297 Chess Dr B

Build your own pizza



Five Guys

933 E Hillsdale Blvd

Burgers, fries, hot dogs,
free peanuts while you wait



Panera Bread

1297 Chess Dr #300

Bakery/Cafe, Sandwiches,
salad, bread, soup



Safeway

921 E Hillsdale Blvd

Longtime Supermarket chain



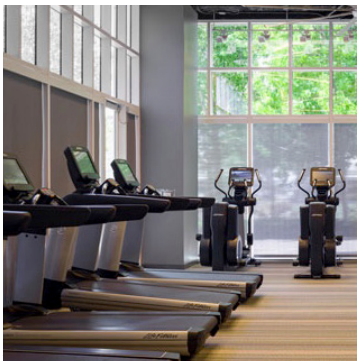
Cooking Papa

949A Edgewater Blvd

Local Chinese chain serving BBQ,
dim sum, clay pot dishes, and noodles

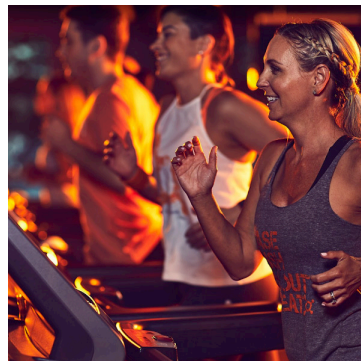
Neighborhood

HEALTH & FITNESS



Onsite Fitness Center

950 Tower Ln 1st Fl



OrangeTheory Fitness

983 E Hillsdale Blvd



Crowne Plaza Hotel

1221 Chess Drive



TownePlace Suites

1299 Chess Dr

ACCOMMODATIONS

HOSPITALITY-DRIVEN WORKPLACE
EXPERIENCES BRING OUT THE
BEST IN YOUR TEAM AND SCALE
ON YOUR OWN TERMS.

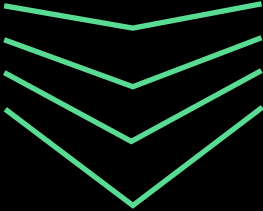
**FIND THE SPACE THAT IS
RIGHT FOR YOU.**

Membership

Virtual Office

Private Office

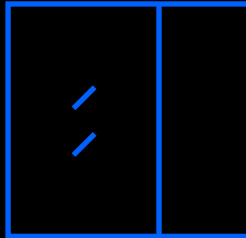
Specialized Floor



Virtual Office

Official mailing address
for your business

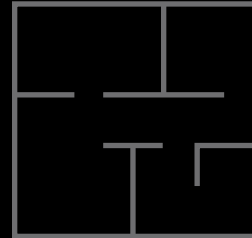
Ideal for business owners and freelancers (and everyone in-between) who is in need of a physical business address and professional mail handling services.



Private Office

Customized, move-in ready
space for teams of 2-20 people

Our luxury, fully-furnished private offices are ideal for teams big or small. Enjoy the privacy and customization of a traditional office, with flexibility on your terms.



Specialized Floor

Tailored workspace for midsize
and large enterprise companies

Private, secure, and personalized furnished floor with the perks of access to corporate office amenities and OnePiece Work's benefits.



HOST YOUR MEETINGS WITH US!

E-mail: opsales@1piecework.com

5

Meeting
Rooms
Available

2

Conference
Call Phone
Booths

Our vibrant, thoughtfully-designed spaces are fully equipped and our booking process is easy and streamlined to make hosting your next offsite meeting a breeze.

From offsite executive meetings, interviews, and creative training sessions, hosting your next meeting at OnePiece Work will be seamless.

Amenities

- Wifi
- Folding Chairs (white)
- TV Screen
- Apple TV
- Kitchen
- Whiteboard
- Wheelchair Accessible
- Free Onsite Parking
- Break Room
- Beverage: Available Upon Request

ONEPIECE WORK LANDSCAPE



Welcome to
OnePiece Work @ Foster City
For More Details,
Please Contact Us.

E-mail: opsales@1piecework.com
Phone: +1 866.622.0588

**WE'RE BUILDING A
BETTER PLACE FOR YOU
TO WORK AND GROW**



**BOTH LOCALLY AND
GLOBALLY.**