



MAKE YOUR MARK



620 N. LASALLE | CHICAGO, IL



rapid


STREAM



AN ENVIRONMENT THAT ENGAGES

620 N LaSalle offers connected and engaging space in full-floor and single-office options. This former coffee factory was built in 1922 and for the last 50 years was used as a sporting good store. The building was completely renovated in 2019 and features a new lobby, roof deck, vertical transportation, common areas and mechanical systems.

There are full floor availabilities as well as fully furnished office suites.



TENANT LOUNGE



CONFERENCE



ROOFTOP DECK



FULLY FURNISHED



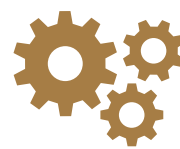
BIKE STORAGE



FITNESS CENTER



AT&T FIBER UP
TO 1,000 MBS



BRAND-NEW
MECHANICALS
AND SEPERATE
HVAC SYSTEMS



ON-SITE PARKING

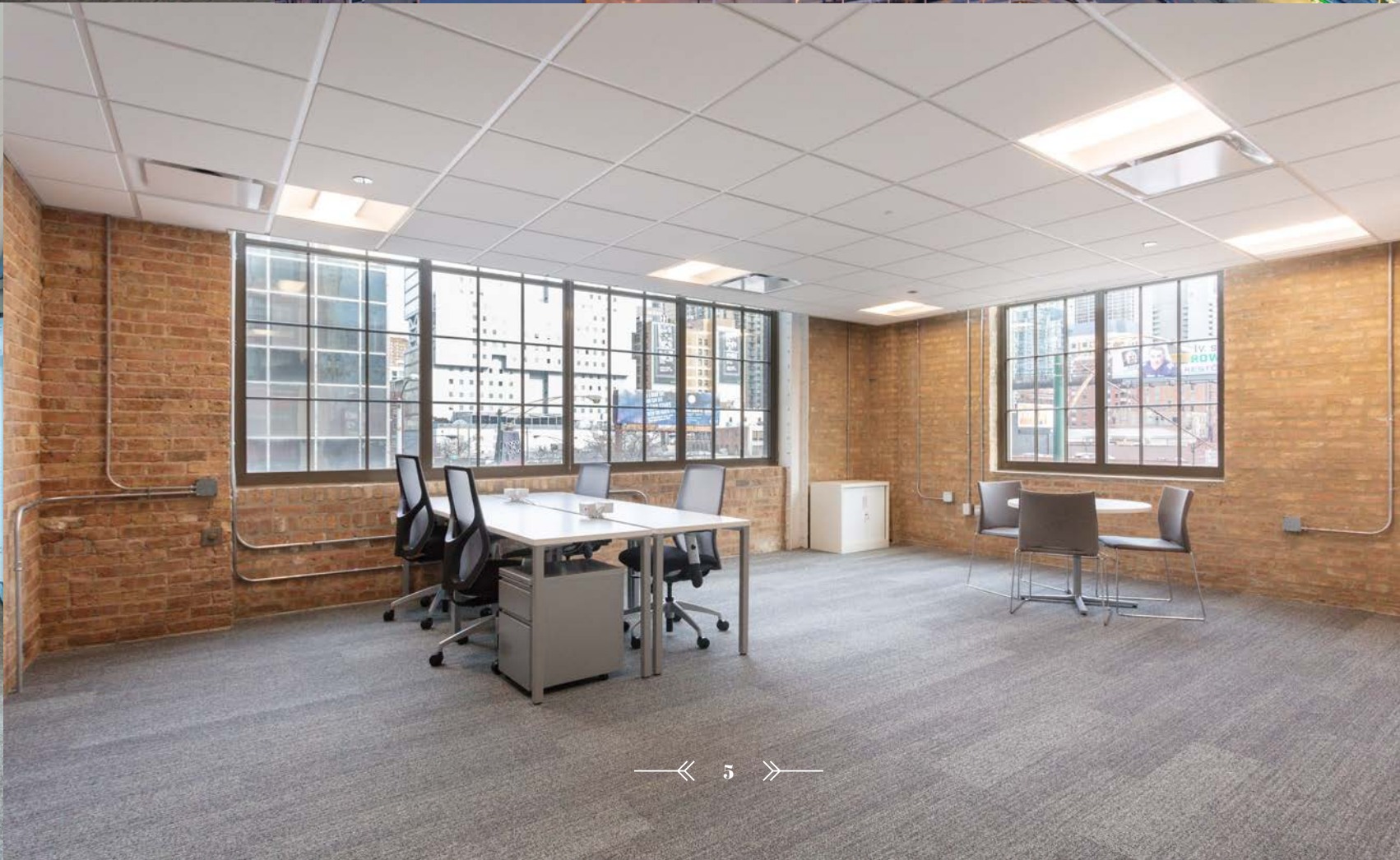
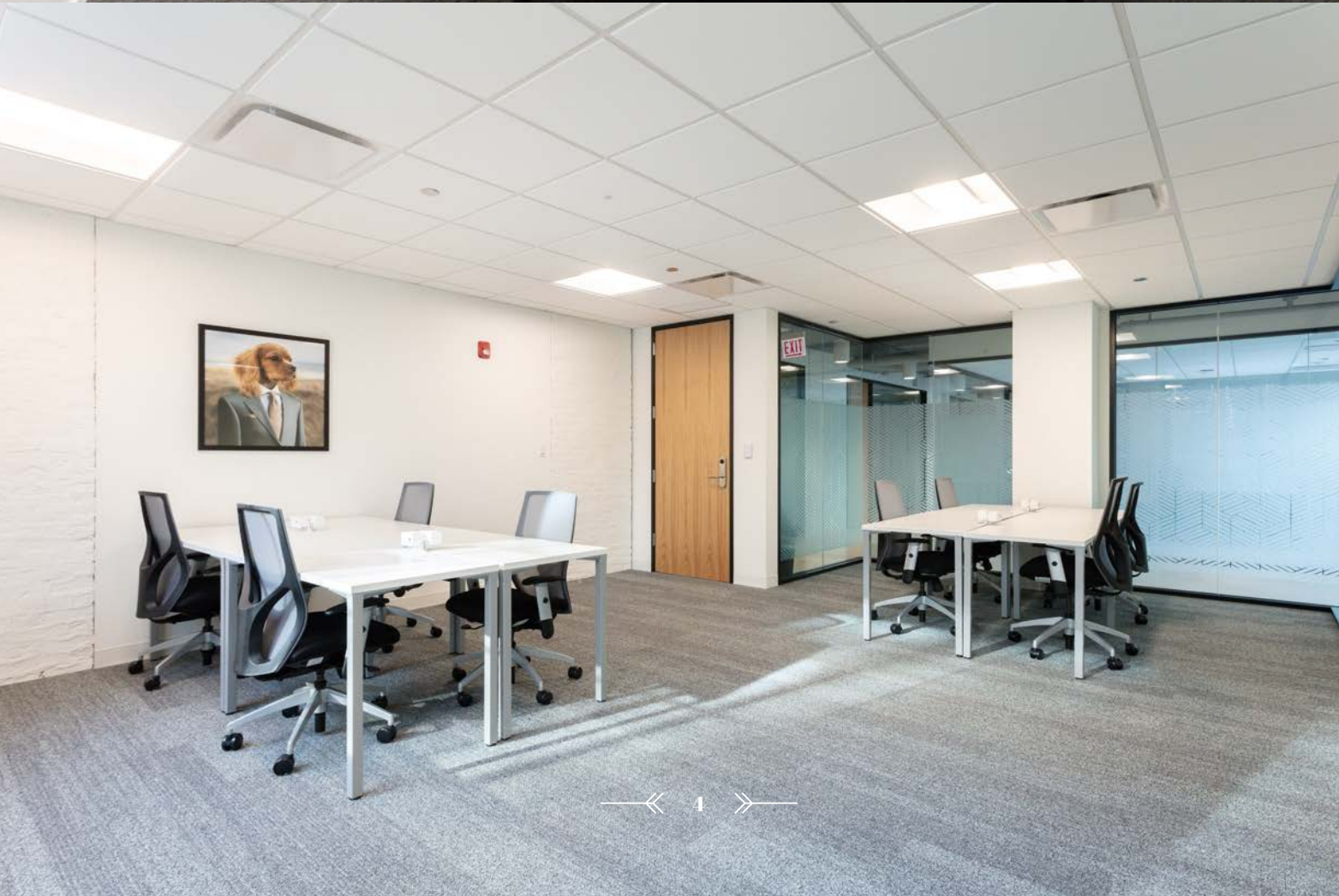


COMMUNITY
MANAGER



NEARBY ACCESS
TO CTA L LINE

Copyright © 2021 Stream Realty Partners. All rights reserved.
The information contained herein was obtained from sources believed reliable; however, Stream Realty Partners, L.P. make no guarantees, warranties or representations as to the completeness or accuracy thereof. The presentation of this property is submitted subject to errors, change of price, or conditions, prior sale or lease, or withdrawal without notice.



AMENITIES THAT INVITE

Located in the heart of the historic River North district, 620 N LaSalle offers access to an abundant number of shops and eateries, pubs and entertainment. Nearby home and office design showrooms, artist’s studios in converted warehouses and lofts create an energetic atmosphere and inviting neighborhood.

AREA AMENITIES



303
RESTAURANTS



114
RETAIL STORES



51
HOTELS



14
FITNESS

ACCESSIBLE ENVIRONMENT



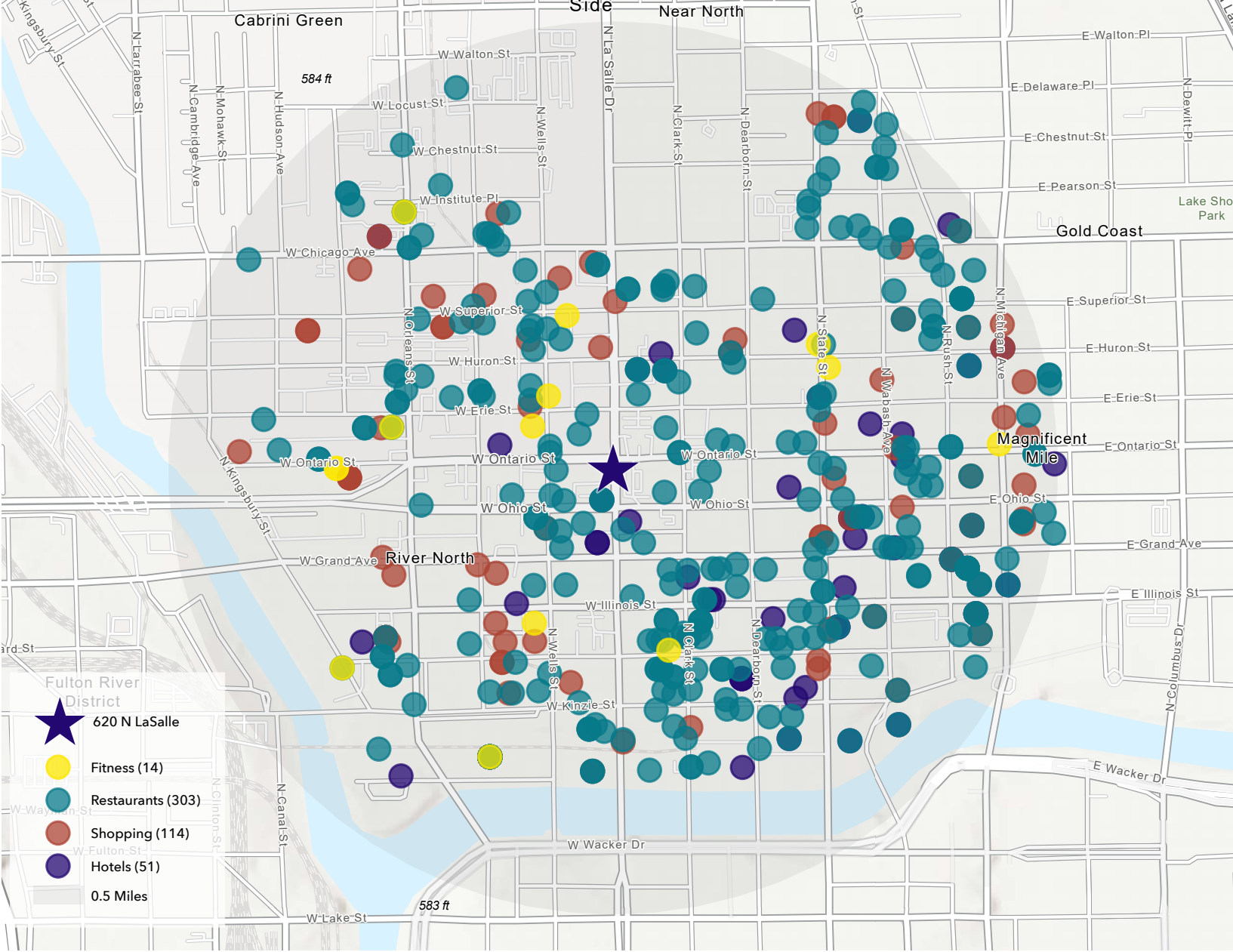
98
WALK SCORE*
*Source: walkscore.com

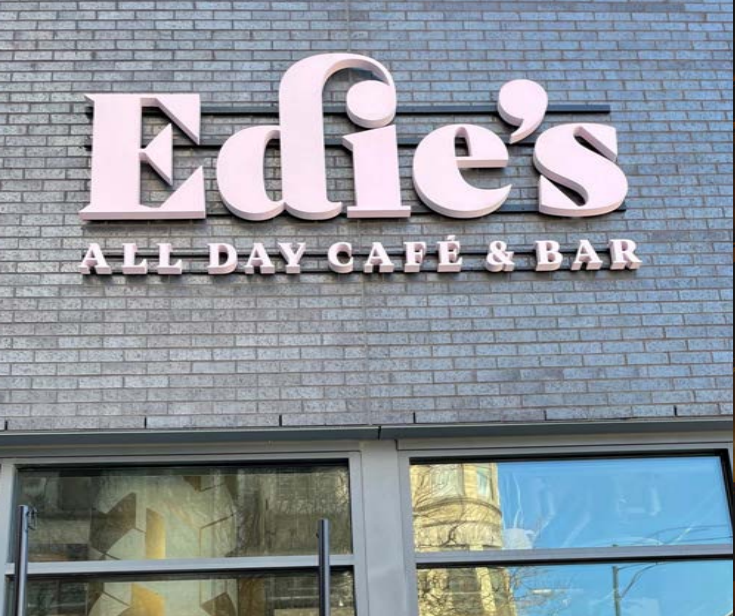


100
TRANSIT SCORE



87
BIKE SCORE





SPACE THAT DELIVERS

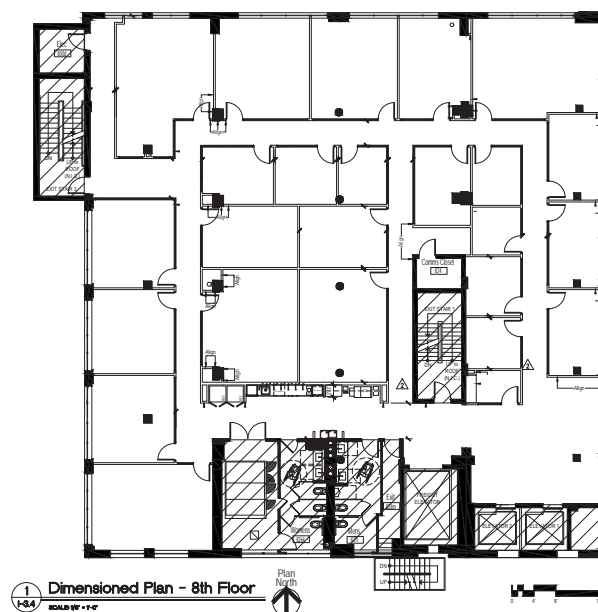
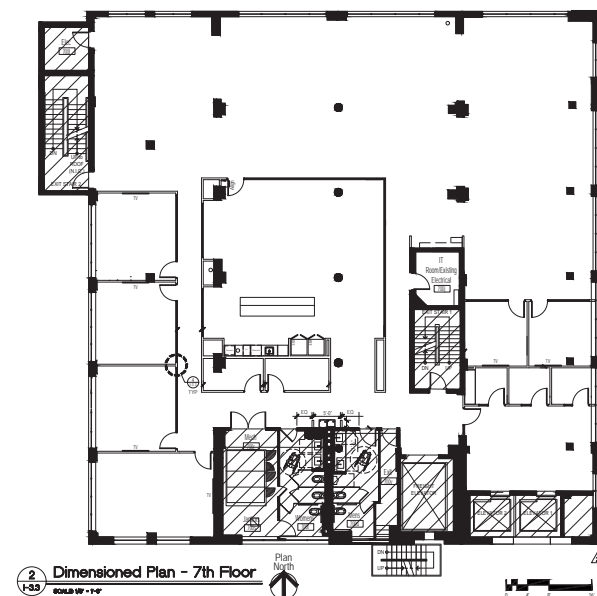
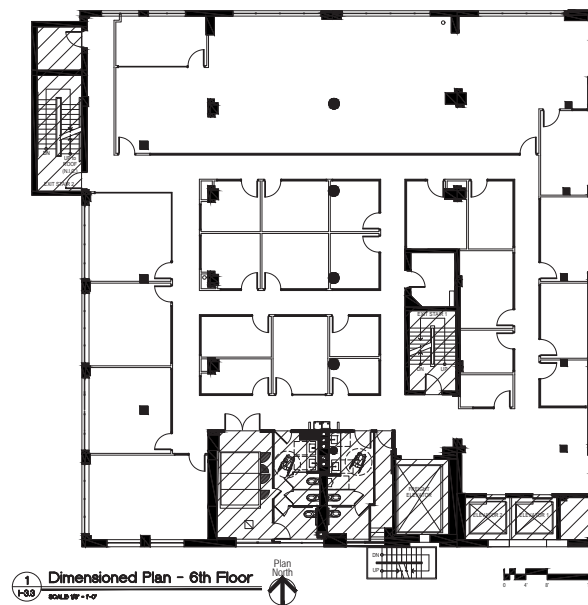
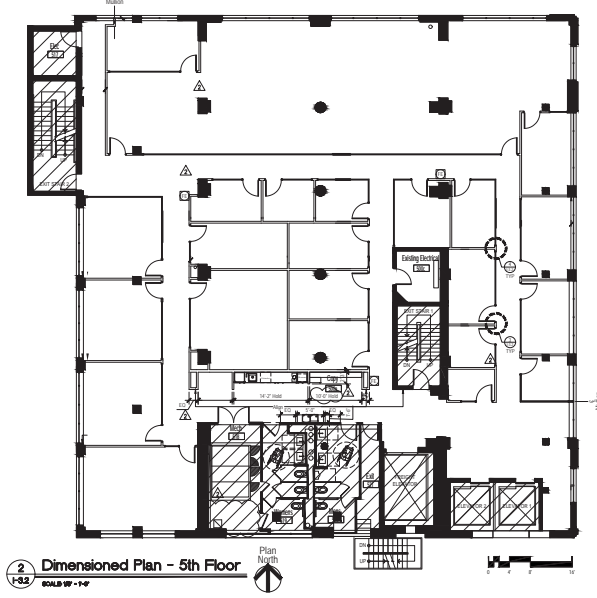
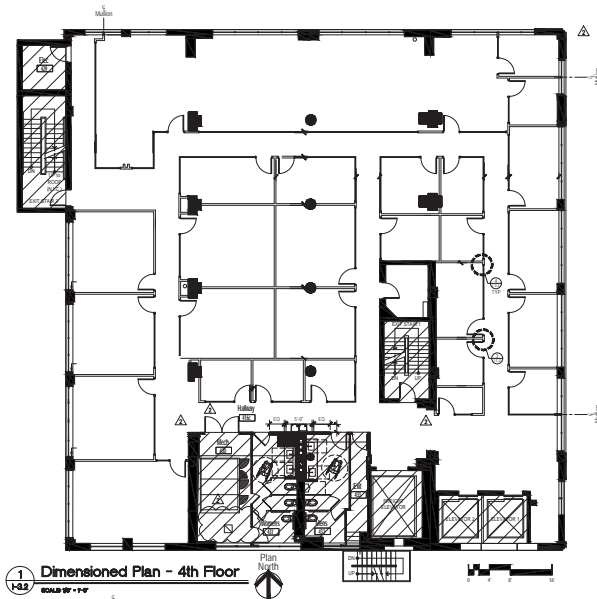
Whether seeking a furnished, wired move-in ready space or full custom-designed floors, 620 offers space that delivers for every requirement.

620 N LaSalle offers

60,000

DAILY
TRAFFIC COUNTS





**MAKE YOUR
MARK**

• • •

620 N. LASALLE | CHICAGO, IL



FIND YOUR SPACE



ADAM SHOWALTER

Managing Director

adam.showalter@streamrealty.com

312.801.9397

JESSICA O'HARA

Senior Vice President

jessica.ohara@streamrealty.com

312.901.9395



WWW.STREAMREALTY.COM